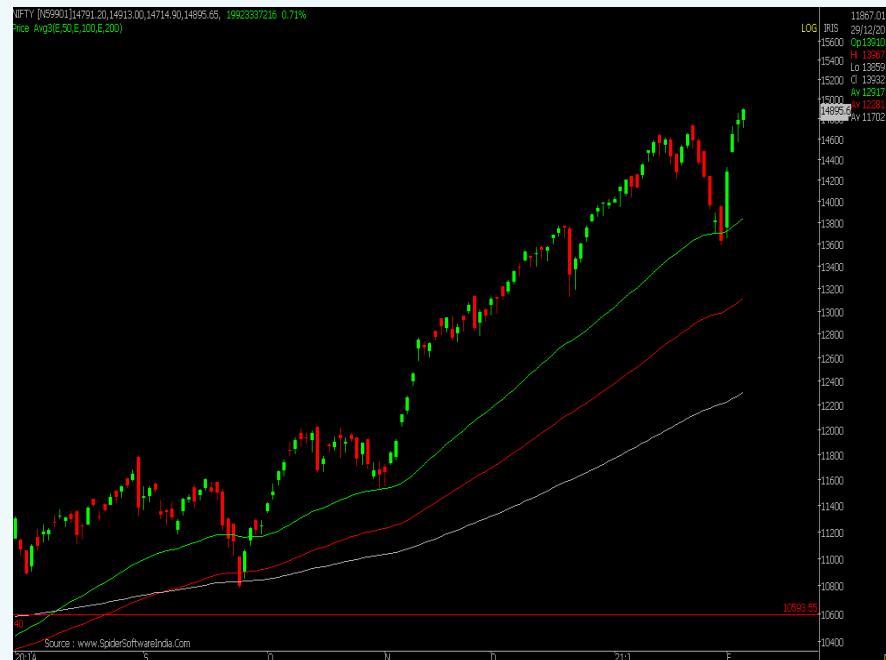


Nifty Outlook

Jubilation continues for the fourth successive session as the benchmark gained over half a percent amid volatility. Initially, weak global cues led to a muted start in the benchmark however healthy buying interest in the sectors such as FMCG, PSU banks and power aided the indices to inch northward as the day progressed. Consequently, the Nifty ended with healthy gains of 0.7% at 14,896 levels. Amongst the sectors, mostly ended on a positive note, barring IT, consumer durables and telecom.

Next, the outcome of the MPC's monetary policy review meeting, which is scheduled for Feb 5, will be closely watched by the participants. The majority expect status quo on interest rates but the commentary on inflation and economic outlook would hold importance. Amid all, we reiterate our view to focus on the selection of stocks and continuing with the "buy on dips" approach. Nifty has the potential to test 15,200 zone ahead.



	VWAP (Expiry till date)	Max OI (Call)	Max OI (Put)
NIFTY	14050	15000	14000

News

- **SBI** reported Q3FY21 numbers wherein its net interest income grew by 3.7% YoY to Rs 28,819.9cr. Its Gross NPA stood at 4.77% as against 5.28% QoQ. Its net NPA was at 1.23% as against 1.59% QoQ.
- **Sundram Fastners** Q3FY21 revenue was up 34.8% at Rs 1,108.7cr as against Rs 822.5cr YoY. Its net profit rose 36.9% to Rs 142.7cr.
- **Zee Entertainment** reported revenue of Rs 2,729.3cr, up by 33.2% for Q3FY21 versus Rs 2,048.7cr YoY. The company posted growth of 14.5% YoY in its net profit at Rs 400cr.

Religare Super Idea**

Scrip	Buy/Sell	CMP	Initiation Range	SL*	Target
INDIGO	BUY	1672.35	1655-1665	1600	1780

**Please note that the given technical and derivative recommendations are "valid for taking position" only on recommended date and in the given range.

*Please note - Stoploss is on closing basis for delivery recommendation and intraday basis for F/O recommendation.

Derivative Ideas **					
Instrument	B/S	Lot	INITIATION RANGE	SL	TARGET
ADANI PORTS	BUY	CASH	560-564	545	590

Sectors to watch	
Sector Name	Outlook
IT	BULLISH
BANKS	BULLISH
FMCG	BULLISH

FII & DII Cash Segment (Rs. in Cr.)			
Category	Amt.	MTD	FYTD
FII**	2521	10197	169962
DII**	-400	-252	-123964

Trade Stats		
	NO OF CONTRACTS	TURNOVER IN CR
IDXFUTS	384140	36873
IDXOPT	83210708	17280
STKFUTS	908593	82766

**Provisional data as on 3rd February, 2021

Derivative Ideas

ADANI PORTS FUT added around 6% in open interest addition as LONG buildup was seen in it in till closing time. Current chart pattern also indicates further up move in its price. We suggest buying ADANI PORTS as per below levels.

Strategy:- BUY ADANI PORTS BETWEEN 560-564 SL 545 TARGET 590.

Investment Pick - Dabur India Ltd.

Scrip	CMP	Recommendation Price	Target	Duration
Dabur India Ltd.	526.1	525	616	9-12 Months

- Dabur India reported healthy set of numbers for Q3FY21 its revenue grew by 16% YoY to Rs 2,729 cr driven by strong volume growth of 18.1% in domestic FMCG business. Its EBITDA grew by 16.5% YoY to Rs 574 cr while margin expansion was flat. PAT grew by 17.8% YoY to Rs 494 cr on the back of lower interest expense.
- Dabur's portfolio is gaining traction each passing quarter largely driven by its focus on health and hygiene segment, new product launches, heavy investment behind their power brands and expanding in rural area. In addition cost optimisation measures and improving go-to-market approach is well supporting company's growth. We remain positive on the company's long term growth plans and have maintained a Buy on the stock with a target price of Rs 616.

CACT Calendar - February 2021 (Cash Dividend)

Sun	Mon	Tue	Wed	Thu	Fri	Sat
31	01	02	03	04	05	06
	<ul style="list-style-type: none"> Phillips Carbon Black Ltd. Symphony Limited 	<ul style="list-style-type: none"> Kajaria Ceramics Ltd. Sagar Cements Ltd. Sundaram Finance Ltd. 	<ul style="list-style-type: none"> Bella Casa Fashion & Retail Ltd Kewal Kiran Clothing Ltd. Menon Bearings Ltd. Wendt (India) Ltd. 	<ul style="list-style-type: none"> A.K.Capital Services Ltd. Emami Ltd. Exide Industries Ltd. Godawari Power & Ispat Ltd. Iifl Finance Ltd Steel Authority Of India Ltd. Sundaram-Clayton Ltd. Tvs Motor Company Ltd. Vaibhav Global Ltd 	<ul style="list-style-type: none"> Cosmo Films Ltd. Nippon Life India Asset Management Ltd 	

CACT Calendar - February 2021 (Spin Off)

Sun	Mon	Tue	Wed	Thu	Fri	Sat
31	01	02	03	04	05	06
				<ul style="list-style-type: none"> Jubilant Life Sciences Limited 		

Result Calendar - February 2021

Mon	Tue	Wed	Thu	Fri	Sat
01 <ul style="list-style-type: none"> Castrol India Ltd. Coromandel International Ltd. Finolex Industries Ltd. Kansai Nerolac Paints Ltd. Mangalore Refinery & Petrochemicals Ltd. Zydus Wellness Ltd. 	02 <ul style="list-style-type: none"> Ajanta Pharma Ltd. Carborundum Universal Ltd. Cera Sanitaryware Ltd. Dixon Technologies (India) Ltd Escorts Ltd. Greenlam Industries Ltd Housing Development Finance Corp.Ltd. lifl Wealth Management Ltd Ion Exchange (India) Ltd. Nocil Ltd. Pi Industries Ltd Ramco Industries Ltd. Tata Consumer Products Ltd Wonderla Holidays Ltd 	03 <ul style="list-style-type: none"> Adani Enterprises Ltd. Adani Green Energy Ltd Apollo Tyres Ltd. Arvind Fashions Ltd Astral Poly Technik Ltd. Bajaj Consumer Care Ltd Bharti Airtel Ltd. City Union Bank Ltd. Deepak Fertilisers & Petrochemicals Corporation Ltd. Hawkins Cookers Ltd. Hindustan Copper Ltd. Indian Hotels Co.Ltd. Inox Leisure Ltd. Jubilant Foodworks Ltd Minda Corporation Ltd 	04 <ul style="list-style-type: none"> Adani Power Ltd. Adani Transmission Ltd Arvind Ltd. Avanti Feeds Ltd. Bajaj Electricals Ltd. Container Corporation Of India Ltd. Dalmia Bharat Ltd Dollar Industries Ltd Gillette India Ltd. Gujarat Narmada Valley Fertilizers & Chemicals Ltd. Godfrey Phillips India Ltd. Godrej Agrovet Ltd Hero Motocorp Ltd. Hindustan Petroleum Corporation Ltd. 	05 <ul style="list-style-type: none"> Aditya Birla Capital Ltd Alkem Laboratories Ltd Ashoka Buildcon Ltd. Automotive Axles Ltd. Mrs. Bectors Food Specialities Ltd Britannia Industries Ltd. Cg Power And Industrial Solutions Ltd Cholamandalam Financial Holdings Ltd Equitas Holdings Ltd Glaxosmithkline Pharmaceuticals Ltd. Gujarat Gas Ltd Gulf Oil Lubricants India Ltd Jamna Auto Industries Ltd. 	06 <ul style="list-style-type: none"> Affle (India) Ltd Bharat Heavy Electricals Ltd. Care Ratings Ltd J.K.Cement Ltd. Magma Fincorp Ltd.

For complete schedule of more Company Results Calendar [click here](#).

CACT Calendar - February 2021 (E.G.M.)

Sun	Mon	Tue	Wed	Thu	Fri	Sat
31	01	02	03	04 <ul style="list-style-type: none"> Nakoda Group Of Industries Ltd 	05 <ul style="list-style-type: none"> Octaware Technologies Ltd Tirupati Starch & Chemicals Ltd. 	06

CACT Calendar - February 2021 (Bonus issue 1:1)

Sun	Mon	Tue	Wed	Thu	Fri	Sat
31	01	02	03 <ul style="list-style-type: none"> Knr Constructions Ltd. 	04	05	06

CACT Calendar - February 2021 (Buy Back of Shares)

Sun	Mon	Tue	Wed	Thu	Fri	Sat
31	01	02	03	04 <ul style="list-style-type: none"> Neelamalai Agro Industries Ltd. 	05 <ul style="list-style-type: none"> National Aluminium Co.Ltd. 	06

Religare Investment Calls

Name of the Company	Reco Date	Current Rating*	Product Type	Reco Price	Target Price	Upside %	CMP	Expected returns from CMP %
Godrej Agrovet	13-Feb-2020	Buy	Investment Call	559	618	10.5%	532	16.2%
INOX Leisure	20-Aug-2020	Buy	High Conviction Ideas	282	376	33.3%	330	13.9%
Godrej Consumer Products	16-Sept-2020	Hold	Investment Call	706	845	19.7%	769	9.9%
Britannia Industries	22-Oct-2020	Buy	High Conviction Ideas	3,397	4,265	25.5%	3,580	19.1%
Castrol India	02-Nov-2020	Buy	Investment Call	114	151	32.5%	131	15.4%
Bharti Airtel	09-Nov-2020	Buy	High Conviction Ideas/ Diwali Picks	450	709	57.6%	601	18.0%
Sudarshan Chemical Industries	09-Nov-2020	Buy	Diwali Picks	442	583	31.9%	502	16.2%
ITC	19-Nov-2020	Hold	Investment Call	190	238	25.3%	230	3.5%
Coromandel International	28-Dec-2020	Buy	New Year Picks 2021	802	978	21.9%	768	27.4%
IRCTC	28-Dec-2020	Buy	New Year Picks 2021	1,409	1,755	24.6%	1,519	15.5%
JK Lakshmi Cement	28-Dec-2020	Buy	New Year Picks 2021	337	428	27.0%	358	19.6%
Manappuram Finance	28-Dec-2020	Buy	New Year Picks 2021	164	205	25.0%	181	13.0%
Natco Pharma	28-Dec-2020	Buy	New Year Picks 2021	932	1,135	21.8%	899	26.2%
SBI Life Insurance	28-Dec-2020	Buy	New Year Picks 2021	874	1,069	22.3%	864	23.7%
Nippon Life India Asset Management	29-Jan-2021	Hold	High Conviction Ideas/ Diwali Picks	320	348	8.8%	331	5.2%
Dabur India	04-Feb-2021	Buy	High Conviction Ideas	525	616	17.3%	526	17.1%

*Current rating is based on returns potential

Buy - Potential Returns $\geq 10\%$ over 12 months

Hold - Potential Returns $\leq 10\%$ over 12 months

For Religare Investment calls performance [click here](#)

Research Product Basket

- For every client, the advisor must allocate a specific proportion of funds for trading and investing depending on the risk taking ability and willingness of the client and their investment goals.
- The below mentioned product basket tries to address the way to deal with the trading portfolio (cash/derivative) for optimum effectiveness of research calls.
- It is recommended to divide your trading funds for various types of calls and not invest the entire amount for 1 or 2 calls only.

For cash market trading					For 1L margin*	
Call / Product	Call Frequency	No. of calls	Avg open call duration	% funds allocated	Total	Per Call
Intraday Calls	Intraday	2 - 3	< 1 day	25%	25,000	8,000
Live / RMD Calls	Daily	3 - 4	3 - 4 days	30%	30,000	4,000
Master Pick	Weekly	1	1 month	15%	15,000	5,000
Religare Alpha	Opportunity	NA	2 - 3 months	20%	20,000	As per weightage
Cash		NA		10%	10,000	
Intraday Calls	These calls are flashed live on Ms Lync and ODIN with the purpose of squaring off positions on the same day. As a policy, we restrict our intraday cash market calls to less than 4 calls a day. Hence, funds should be allocated accordingly to have provision to trade in all calls.					
Live / RMD Calls	2 super ideas are flashed in RMD daily with a view of 3-4 days. Additionally as per market opportunity, we flash live calls during the day (including BTST calls). 3-4 such calls are made on a daily basis which might be open for 3-4 days. Funds should be allocated keeping in mind that there will be 7-8 such open calls daily.					
Master Pick	This is our weekly recommendation shortlisted on the basis of techno-funda analysis. 15% of funds is recommended to be allocated for Master Pick considering that there will be 3 open calls. The average open duration for this call will be 1 month.					
Religare Alpha	This is a portfolio of 8-10 stocks which are held with a view of 2-3 months. It is recommended to allocate 20% of funds for building this portfolio which will provide stability to the overall trading portfolio.					
Cash	10% surplus cash in the portfolio should be kept for the purposes of allocating it to opportunities as and when they arrive.					

For derivative market trading					For 1L margin*	
Call / Product	Call Frequency	No. of calls	Avg open call duration	% funds allocated	Total	Per Call
Derivative Ideas	Daily	1 - 2	1 - 3 days	40%	40,000	40,000
Live calls	Intraday / Daily	1 - 2	3 - 4 days	50%	50,000	50,000
Cash		NA		10%	10,000	
Derivative Ideas	1 derivative idea is shared in RMD daily. It can be a plain vanilla F&O buy/sell call or an option strategy. Funds should be allocated assuming 2 such calls will be open at any time. These calls are open for 3-4 days on an average.					
Live Calls	These calls are flashed on MS Lync and ODIN during live market hours. These calls can be intraday or with a view of 2-3 days. Funds should be allocated considering 2 such calls will be open at any time. 3/4 times, these calls will be on Nifty / Bank Nifty only.					
Cash	It is recommended to hold 10% cash to capitalize on any opportunity that may arise in markets.					

Research Analysts

Ajit Mishra	ajit.mishra@religare.com
Himanshu Sharma	himanshu.sharma1@religare.com
Manoj M Vayalar	manoj.vayalar@religare.com
Nirvi Ashar	nirvi.ashar@religare.com
Rohit Khatri	rohit.khatri@religare.com
Suhanee Shome	suhanee.shome@religare.com

Before you use this research report , please ensure to go through the disclosure inter-alia as required under Securities and Exchange Board of India (Research Analysts) Regulations, 2014 and Research Disclaimer at the following link : <https://www.religareonline.com/disclaimer>

Specific analyst(s) specific disclosure(s) inter-alia as required under Securities and Exchange Board of India (Research Analysts) Regulations, 2014 is/are as under:

Statements on ownership and material conflicts of interest , compensation– Research Analyst (RA)

[Please note that only in case of multiple RAs, if in the event answers differ inter-se between the RAs, then RA specific answer with respect to questions under F (a) to F(j) below , are given separately]

S. No.	Statement	Answer	
		Yes	No
	I/we or any of my/our relative has any financial interest in the subject company? [If answer is yes, nature of Interest is given below this table]		No
	I/we or any of my/our relatives, have actual/beneficial ownership of one per cent. or more securities of the subject company, at the end of the month immediately preceding the date of publication of the research report or date of the public appearance?		No

	I/we or any of my/our relative, has any other material conflict of interest at the time of publication of the research report or at the time of public appearance?		No
	I/we have received any compensation from the subject company in the past twelve months?		No
	I/we have managed or co-managed public offering of securities for the subject company in the past twelve months?		No
	I/we have received any compensation for brokerage services from the subject company in the past twelve months?		No
	I/we have received any compensation for products or services other than brokerage services from the subject company in the past twelve months?		No

	I/we have received any compensation or other benefits from the subject company or third party in connection with the research report?		No
	I/we have served as an officer, director or employee of the subject company?		No
	I/we have been engaged in market making activity for the subject company?		No

Nature of Interest (if answer to F (a) above is Yes :

Name(s) with Signature(s) of RA(s).

[Please note that only in case of multiple RAs and if the answers differ inter-se between the RAs, then RA specific answer with respect to questions under F (a) to F(j) above , are given below]

SS.No.	Name(s) of RA.	Signatures of RA	Serial Question of question which the signing RA needs to make a separate declaration / answer	Yes	No.

Copyright in this document vests exclusively with RBL. This information should not be reproduced or redistributed or passed on directly or indirectly in any form to any other person or published, copied, in whole or in part, for any purpose, without prior written permission from RBL. We do not guarantee the integrity of any emails or attached files and are not responsible for any changes made to them by any other person.

No representations are being made about the performance or activities unless accompanied by data regarding performance, disclosures of all the risk factors, etc. and disclaimer that "Such representations are not indicative of future results"